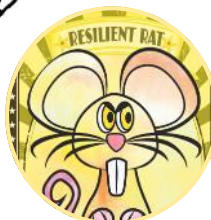


# The LF Post

Issue 30  
24.5.19



## London Fields Fieldwork!

We had a fantastic Fieldwork day across the school last Friday. It was wonderful to see pupils progressing in their fieldwork skills and having a voice about issues in our local area. Our projects were:  
Year 2 and Year 3- We had to improve the park by collating data about how people were currently using it and asking opinions.

Park User count		FIELDWORK	
Area of park	Time	Tally to show number of users	
		Day1	Day2
Play ground	09:00		
Active walk	10:00		
LI'DO	20:00		
SPORT COURT	11:30		
PLAYERS PARKING			

Year 4- Our project had to turn London Fields Park



into a game! Using a mixture of coordinates, compass directions and observational clues we had to create a treasure hunt game in the park.

Year 5 -We discussed our own

personal experiences of using the canal and read reviews written by tourists who had visited. We weighed up the good and not so good points of the canal.

Don't worry Y6- you will be doing yours after half term!



## Calling all Girls & Boys aged 5 years +

Join one of London's fastest growing & most successful cricket clubs for year round training & a full calendar of action-packed matches...come & have some fun, no experience needed!

**STOKE NEWINGTON CRICKET CLUB**  
At the heart of Hackney cricket

Sign up for professional coaching, excellent indoor & outdoor facilities and most importantly have some fun, playing at the level that suits you.

For more information contact Duncan at [sncc@btinternet.com](mailto:sncc@btinternet.com) or 07770 803 384 or check out our website:

[www.stokenewingtoncricketclub.com](http://www.stokenewingtoncricketclub.com)



# Dates for your diary

Dates for 2018/9		Dates for 2019/20	
3rd June	FIRST DAY SUMMER 2	2nd September	SCHOOL CLOSED FOR INSET
6th June	Y5 to Royal Institute	3rd September	FIRST DAY AUTUMN 1
7th June	Y5 to Royal Institute	18th October	LAST DAY AUTUMN 1
27th June	International Picnic 3.30—5pm	28th October	FIRST DAY AUTUMN 2
4th July	Y5 to First State Investments for Work Week	19th December	LAST DAY AUTUMN 2 —SCHOOL CLOSSES AT 2pm
11th July	Parents' and Carers' Evening	6th January	FIRST DAY SPRING 1
17th July	Y2 Swimming	14th February	LAST DAY SPRING 1
19th July	LAST DAY SUMMER 2—SCHOOL CLOSSES AT 2pm	24th February	FIRST DAY SPRING 2
		3rd April	LAST DAY SPRING 2—SCHOOL CLOSSES AT 2pm
		20th April	FIRST DAY SUMMER 1
		22nd May	LAST DAY SUMMER 1
		1st June	FIRST DAY SUMMER 2
		17th July	LAST DAY SUMMER 2—SCHOOL CLOSSES AT 2pm

## Attendance Update

Week 5—Summer Term 1  
Zhang— 99% Ahlberg—97%

Whole school average - 96%

