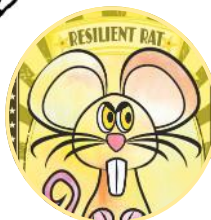




The LF Post

Issue 23
15.3.19



CYCLE TO SCHOOL AND GET A FREE BREAKFAST AND BIKE CHECK!

On Thursday 21st March, we will be hosting a Bikers' Breakfast from 08:30am. Alongside a free breakfast, Dr Bike will also be available to complete a maintenance check on everyone's bikes (including parents and staff!)



London Fields is making history! The first ever Hackney school bike market will be taking place on Tuesday 19th March. The markets provide a great opportunity to pick up a serviced, affordable bike for you or your child or sell an unwanted bicycle, earn a little money and in the process create affordable bike stock for others in your community. For more information visit <https://www.peddlemywheels.com/school-markets/277/2019-03-19/london-fields-primary-school-bike-market>

London Fields on Radio 4 - Costing the Earth

Next Tuesday, the radio 4 programme Costing the Earth will be looking at problems caused by air pollution and initiatives to improve air quality. They came to London Fields to interview teachers and parents about the improvements to air quality through School Streets. You can listen live or use the link below to listen after the programme has been aired on Tuesday. <https://www.bbc.co.uk/programmes/m0003d03>



FOREST SCHOOL FUNDRAISER

The grand total was a huge £957.01!! Thank you so much to everyone for their generosity in donations, cake making and time. The money is going to be spent on stocking up with really good quality thermals, socks, trousers, waterproof gloves, backpacks and lots of tin mugs for the essential hot chocolate! A special big thank you to Marley for being so proactive and organising this fund raiser—we really appreciate all the extra hours you have put in to helping the school.



Ducklings arrive in year 2!

Year 2 received 10 duck eggs this week and they have already started to hatch.



Our big question in Science is, 'Do I need the same things as a duckling?' and we are observing how these ducklings grow over a period of 10 days. We can't wait to see what happens to them as they start to grow and develop.

Dates for your diary

Dates for 2018/9		Dates for 2019/20	
18th March	Y2 to National Portrait Gallery (Ilori)	2nd September	FIRST DAY AUTUMN 1
25th March	Y2 to National Portrait Gallery (Eames)	18th October	LAST DAY AUTUMN 1
26th March	Y3 to British Museum	28th October	FIRST DAY AUTUMN 2
4th April	Film night: Nursery to Year 5, 5-7pm	19th December	LAST DAY AUTUMN 2 —SCHOOL CLOSES AT 2pm
5th April	SCHOOL CLOSED FOR INSET	6th January	FIRST DAY SPRING 1
23rd April	FIRST DAY SUMMER 1	14th February	LAST DAY SPRING 1
24th April	Y1 to Ridley road Market and Victoria Park Y3 and 5 to Walthamstow Wetlands	24th February	FIRST DAY SPRING 2
3rd May	Y1 to Hackney City Farm	3rd April	LAST DAY SPRING 2—SCHOOL CLOSES AT 2pm
7th May	Y4 to Walthamstow Wetlandsa	20th April	FIRST DAY SUMMER 1
8th May	Y5 to USB for Work Week	22nd May	LAST DAY SUMMER 1
10th May	Y1 to Epping Forest	1st June	FIRST DAY SUMMER 2
17th May	Y1 to Hackney Marshes	17th July	LAST DAY SUMMER 2—SCHOOL CLOSES AT 2pm
20th May	SPORTS DAY		
24th May	LAST DAY SUMMER 1		
3rd June	FIRST DAY SUMMER 2		
6th June	Y5 to Royal Institute		
7th June	Y5 to Royal Institute		
27th June	International Picnic 3.30—5pm		
4th July	Y5 to First State Investments for Work Week		
11th July	Parents' and Carers' Evening		
17th July	Y2 Swimming		
19th July	LAST DAY SUMMER 2—SCHOOL CLOSES AT 2pm		

Attendance Update

Week 3—Spring Term 2

Duffy – 100%

Eames —98%

Whole school average - 97%

